

DON'T MOW, let it
grow

dontmowletitgrow.com



Causeway
Coast & Glens
Borough Council

This project is a partnership between CC&GBC, DfI and NIEA



Welcome

DON'T MOW, let it
grow 



Rachel Bain

Biodiversity Officer & Project Manager

Don't Mow, Let It Grow

Causeway Coast & Glens Borough Council

DON'T MOW, let it
grow 

Clr Joan Baird

Councillor

Causeway Coast & Glens Borough Council

DON'T MOW, let it
grow 

Jim McGreevy

Committee Member

Heritage Lottery Fund

DON'T MOW, let it
grow



Rachel Bain

Biodiversity Officer & Project Manager

Don't Mow, Let It Grow

Causeway Coast & Glens Borough Council

DON'T MOW, let it
grow

Take it easy
and let the
grass grow

DON'T MOW, let it
grow



Why Care?

- Dramatic decline in hay meadows
- Pressures
- Native wildflowers
- Pollinators
- Ecosystem services





Verges & amenity



- Grassland refuge
- Biodiversity highway
- Very visible

Community & volunteer engagement

- Surveys
- Events
- Sightings
- Photography
- Blogging
- Volunteer
- Roles for all skills & interests



Training for volunteers & land managers





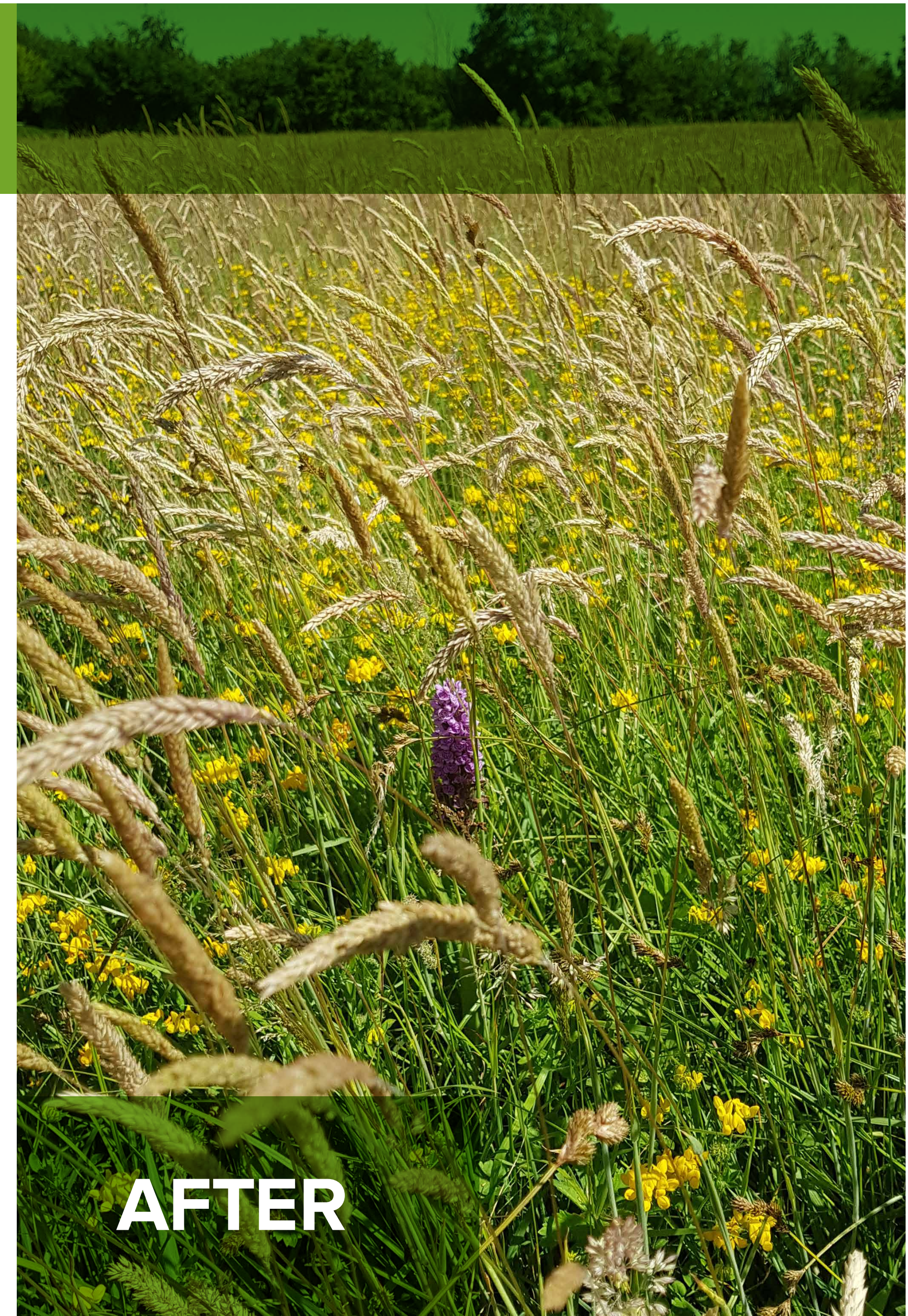
Selection Criteria
20 Road Verges
18 Council Parks
Over 60 IAS



*Small change
of management,
big benefits*

DON'T MOW, let it
grow

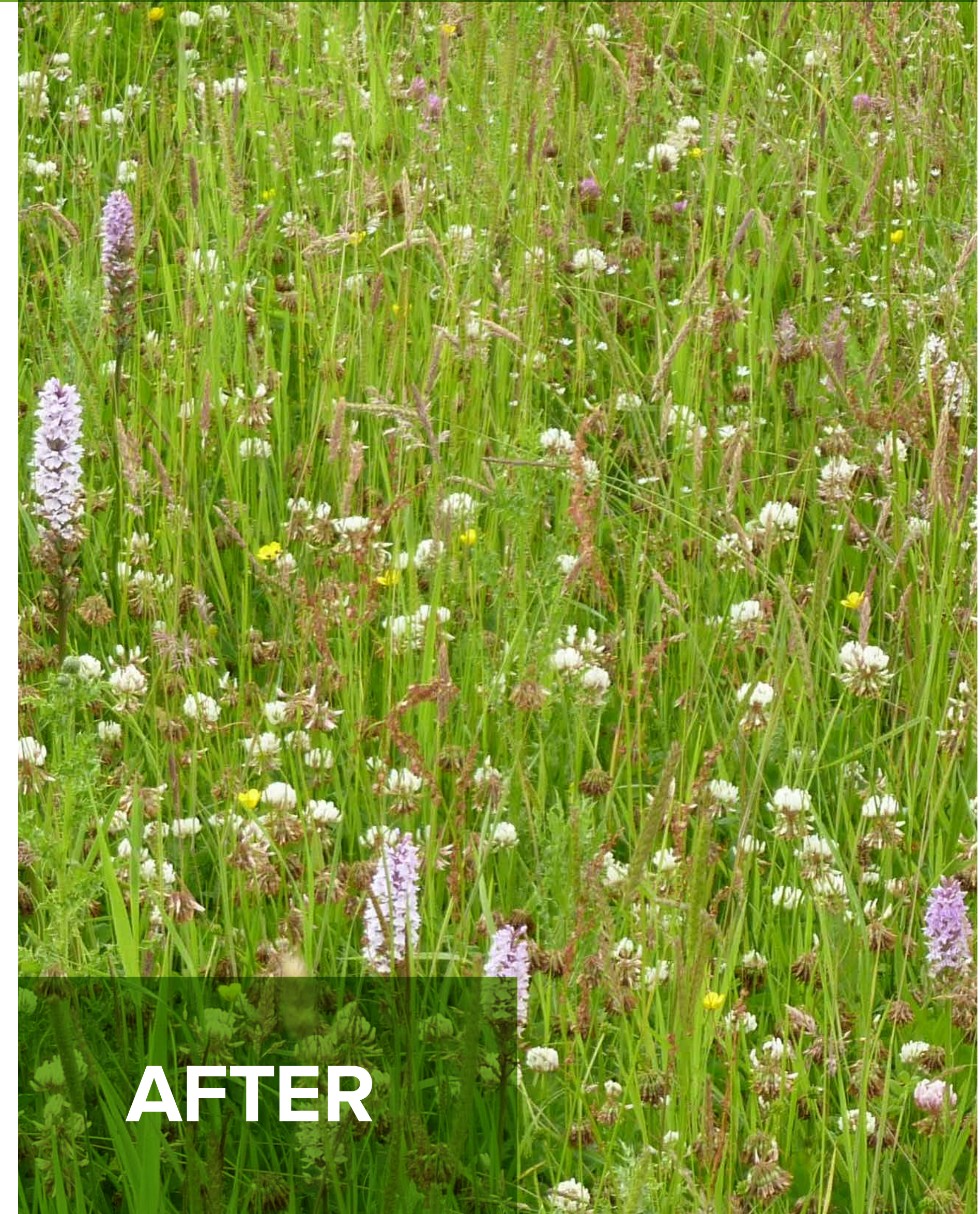
Joey Dunlop centre



Rasharkin



BEFORE

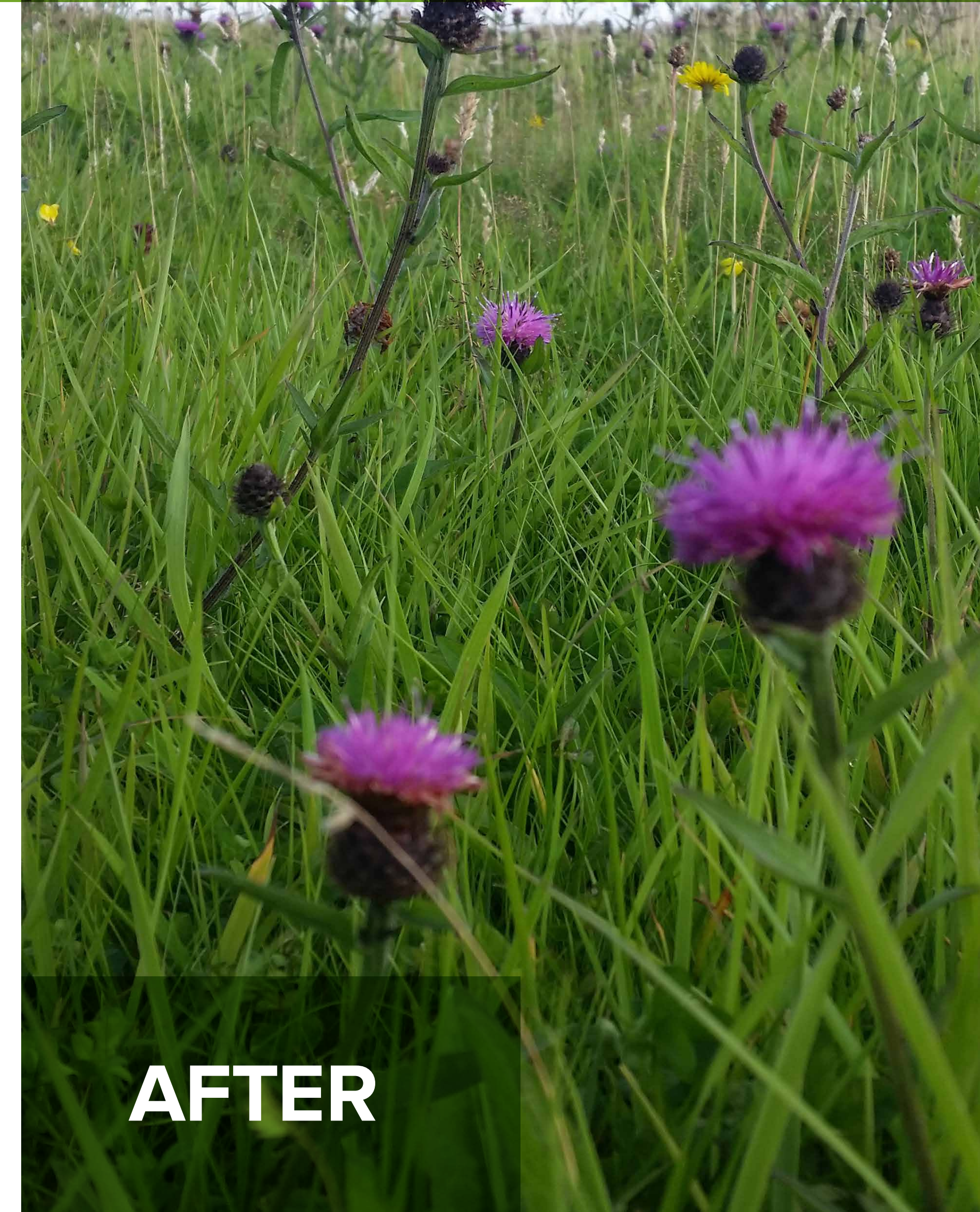


AFTER

Ramore Head



Portaneevy





Limavady Area

Greysteel Glen



Ballykelly Road

Limavady Area



Shanreagh Park



Backburn Park

Bishops Road



Quilly Road



Kinbane





Engaging wider
public bodies

Cost benefit
analysis



A close-up photograph of several pink cherry blossoms in full bloom. The petals are a soft pink color with darker pink veins radiating from the center. The flowers have yellow centers with stamens. The background is a blurred green, suggesting foliage.

Website

dontmowletitgrow.com

Facebook

1500+ likes

Public Perception Survey



Participation:

Year one:

190

Year two:

263

- 97% (98%) important to manage areas for wildlife
- 80% (87%) preferred long grass
- 95% important to increase public understanding
- 80% (93%) quality of green space impacts their decision on whether or not, and how often to visit an area



Management Toolkit
to share all project outcomes

**Positive
Change**
for People
and Biodiversity





The end or just the beginning?



Gary Quinn

Network Maintenance Manager

Dept for Infrastructure

DON'T MOW, let it
grow 

A view from DfI Roads

Why did we get involved?

- Duty to the Citizen
- Future generations
- CCG AONB
- Budget constraints
- Options
- Lessons to learn

Delivery issues?

- Appropriate sites
- Safety
- Timing of cutting
- Staff awareness & training

A view from Dfl Roads

Our experience?

- Very positive
- Local & HQ Engineers' supportive
- Good feedback from road users
- Some issues with rogue cutting
- Challenge established practice and educate

The future?

- Dfl Roads a willing participant
- Welcome future collaborations with Council or similar funded initiatives

Invasive species

- Proactive in trying to eradicate Japanese Knotweed
- Site locations
- Use of an experienced contractor



Melina Quinn

Biodiversity Conservation Science

Northern Ireland Environment Agency

DON'T MOW, let it
grow



Department of
**Agriculture, Environment
and Rural Affairs**

Our main objective is to support

*a living, working, active
landscape, valued by everyone*



Our aim:

*Working together
to create an
island where
pollinators can
survive and thrive*

Simon King

OBE

Film Maker and Presenter

DON'T MOW, let it
grow

Thank you

Please keep in touch:

dontmowletitgrow.com

DON'T MOW, let it
grow



This project is a partnership between CC&GBC, DfI and NIEA